



**SGS MUSCOWPETUNG**  
**ABORIGINAL CONSTRUCTION MONITORING**  
**WEEKLY REPORT**  
**SPREAD 6**  
**JANUARY 21<sup>ST</sup> TO JANUARY 27<sup>TH</sup>, 2019**

### Social and Cultural Features

Field Observation	# of occurrences	Description and Mitigation Measures	Mitigation Status	Further Action Required (Yes/No)
Traditional Use Area (hunting, fishing, gathering, trapping)	3	805.63 – 805.93 HER 150, 151 798 + 700 Her 146 Dkmh-41 802 + 500 Her 147,148,149 DkMh-37, DkMh -40 and DkMh- 39.	Tie ins completed backfilling and restoration.	Continue to Monitor
Rock Formations (rocks of significance, tipi rings, etc.)				
Artifacts				
Bones				
Potential Gravesites				

### Environmental Features

Field Observation	# of occurrences	Description and Mitigation Measures	Mitigation Status	Further Action Required (Yes/No)
Medicinal or Cultural Plants				
Aquatic Life				
Animal Observations or Burrows				
Bird Nests				
Trees (Red Willow)				
Wetlands	6	SK 826 Class III SK 805 Class V SK 847 Shrubby swamp SK 876 Class IV SK 852 Class IV SK 869 Class IV	Monitoring Wetland excavation tie in/ backfilling/restoration	Continue to monitor the various stages of construction
Watercourse Crossing				

## Additional Observations and Summary of Activities or Concerns

This week safety focused on stretching 101. Stretching before work every day is recommended for increased flexibility and improved circulation. Slips trips and falls was a daily reminder with the slippery conditions on right of ways. When walking on icy or snow-covered areas taking shorter steps and walking at a slower pace helps a person react quickly to a change in traction. Traction Aids are mandatory on site. Everyone was reminded to take special care when entering and exiting their trucks- use three-point contact at all times.

Our team monitored the west side of the Pipestone Creek this week SSKP 805.63 – 805.93 HER 150, 151 The section of pipe that runs through the block valve area with the piles was hoarded in. At 805 + 400, observed the ice blocks cut-out of the Pipestone creek for the flow test. Our team observed the wing walls down at the area beside the matting over the area of interest. Deer/ wildlife use this path for crossing and have trampled an area of the geo wing wall. The geo tech material was fixed and the wing walls are in place. Our team will continue to monitor all construction activities within this area.

At East side of the Pipestone Creek, Enbridge Construction Manager facilitated a tour to Archaeologists and ICM's. and met with the teams each morning to review daily activities. At 805 + 770 an additional string was welded onto the concrete coated section that will be placed across the creek. On the opposite end of the section a pull head was attached. At 806 + 253 the rig was set up to complete the bore at the entry bore pit. Crew completed 39" ream and cleaned out the pass to instal the 36" product pipe. Since this is a heavy rocky area, the drill rig encountered few rocks in bore path. After the bore was completed, the drill rig was moved to the road crossing. At 807 + 557 (the Enbridge hotline corridor), the excavator completed a ramp for the hydrovac trucks for the lines to be daylighted every 3m. Hydrovacs daylighted lines at 806 + 722, 807 + 220 and at 807 + 670 Enbridge parallel lines were daylighted. And at 805 + 220 TEMPL hotlines were daylighted. The isolated crossing of the Creek is scheduled to be completed next week. An updated crossing plan was completed by the contractor. Environmental personnel are monitoring the area daily.

Continued monitoring of the Little Pipestone Creek 751 + 400 – 752 + 400 Her 138, 139 dimi – 4, dimi-3 sand bedding and backfilling was completed at the creek area. The sections of pipe were lowered in the ditch and tied in. A test of the pipe was completed. Additional sand bedding was placed on pipe and track hoes started to backfill. Our team observed additional sites at various stages of construction. At 802 + 300 Welders completed tie in on bend section at MB 1027 Her area 148, 802 + 500 Her 189 DkMh 42 Track hoe was backfilling ditch and dozer continued pushing roach back on ditch line. 786 + 500 – 788 + 300 travelled the ROW observing the roped off area of interest at the stony Creek location. Our team also observed restoration of wetlands 737 + 100 SK 828 ,740 + 650 SK 847, 742 + 250 SK 851,745 + 400 SK 863, 747 + 000 SK 869, 753 + 400 SK 876; and monitored excavating ditch at wetland SK 895 762 + 200.

Our team observed crew prepping for the pressure test at 735 + 560 A ramp and water hose was installed across field to water source (Charles Lake) The discharge location was set up. Over two hundred straw bails were placed at the dewatering area and a berm was installed at the dewatering area. Utility crew set up hoarding around the pumps and equipment. Test trailers were on site with instrumentation. At 706 + 950 (Test Point) Spoil pile was moved for extra work space, additional ditching was completed. Boiler was set up at water source., the water must be heated to 50°C.Crew started filling the sections to conduct the test.

Additional observations this week included - 755 + 100 The open cut excavation at the road access. The road crossing was excavated. The base of the ditch was then sand padded stringing crew lowered in the six-joint road section with the side booms. Welders completed the tie in and the pipe was shaded with additional sand. The area was backfilled with clay and machine packed. Open cut excavations are completed within a short period to allow minimum time of road closure.

Night shift continued to pump water out of bell holes / ditches and tie in points and maintained right of ways with picking up debris and any items that could get buried under the snow.

## Photos of Sites Visited & Topics Discussed This Week



804 + 600 sand shading pipe



755 + 100 Lowering pipe



806 + 200 welding onto section



755 + 100 lowering in pipe for tie in



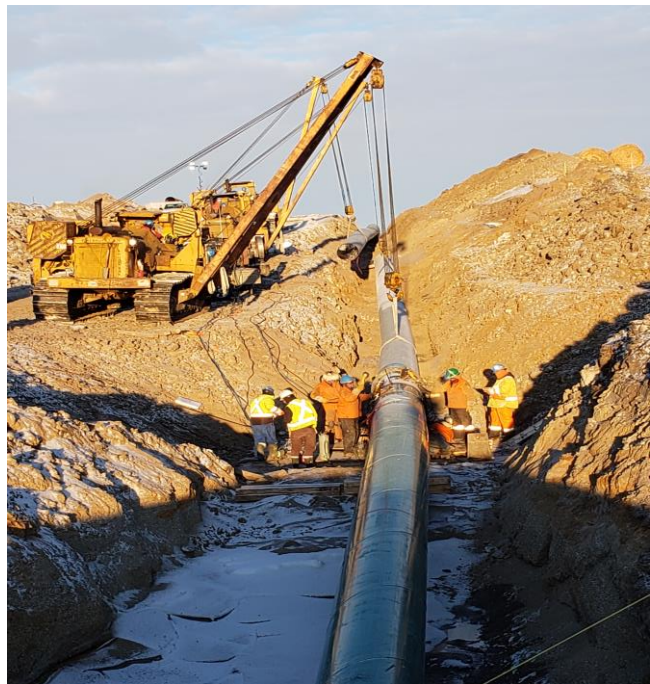
802 + 500 backfilling ditch.



798 + 950 daylighted cable



802 + 300 Welders completing tie in on pipe



751+400 Crew doing a tie in.



Little Pipestone restoration



735 + 600 Hydrostatic testing head installed for testing



8055 + 100 backfilling ditch & pipe hoarded in



806 + 253 HD Bore

## Approvals

### Prepared by

D. Masney

Darlene Masney  
Senior Construction Monitor

January 27, 2019

### Reviewed by

J Roach

Joseph Roach  
Project Manager

January 29<sup>th</sup>, 2019

### Approved by

E Olotu

Emmanuel Olotu, P.Eng.  
Technical Manager, Geotechnical

January 29<sup>th</sup>, 2019



This document is issued by the Company under its General Conditions of Service available on request and accessible at [http://www.sgs.com/terms\\_and\\_conditions.htm](http://www.sgs.com/terms_and_conditions.htm). Attention is drawn to the limitation of liability, indemnification and jurisdiction issues defined therein. Any other holder of this document is advised that information contained hereon reflects the Company's findings at the time of its intervention only and within the limits of Client's instructions, if any. The Company's sole responsibility is to its Client and this document does not exonerate parties to a transaction from exercising all their rights and obligations under the transaction documents. Any unauthorized alteration, forgery or falsification of the content or appearance of this document is unlawful and offenders may be prosecuted to the fullest extent of the law.